

MONTHLY MEMBERSHIP PROGRESS REPORT

LOCATION NEPAL

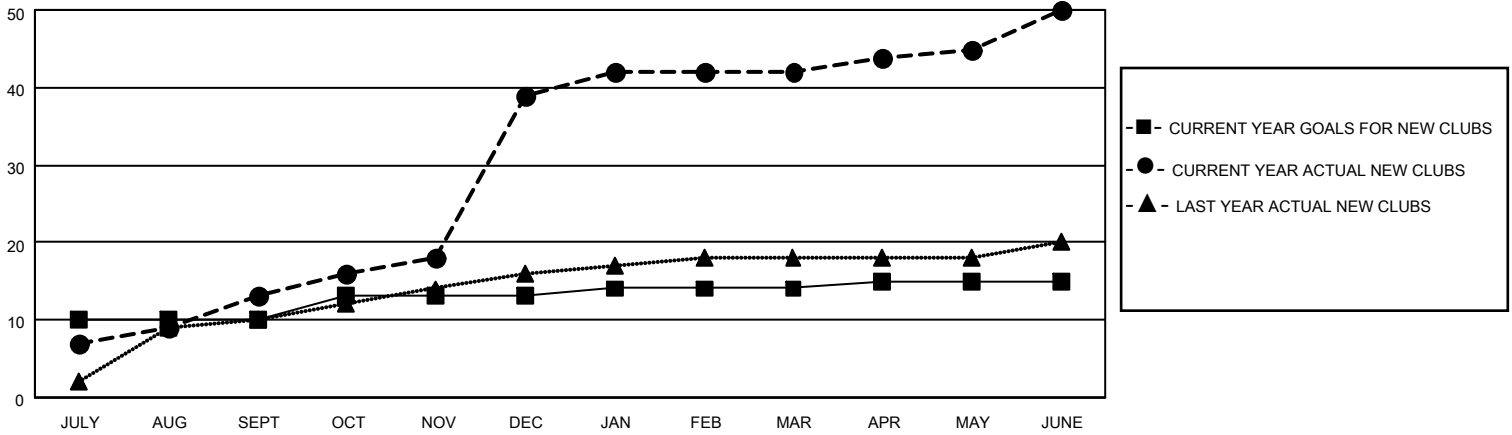
District 325A2

Results as of: 6/30/2021

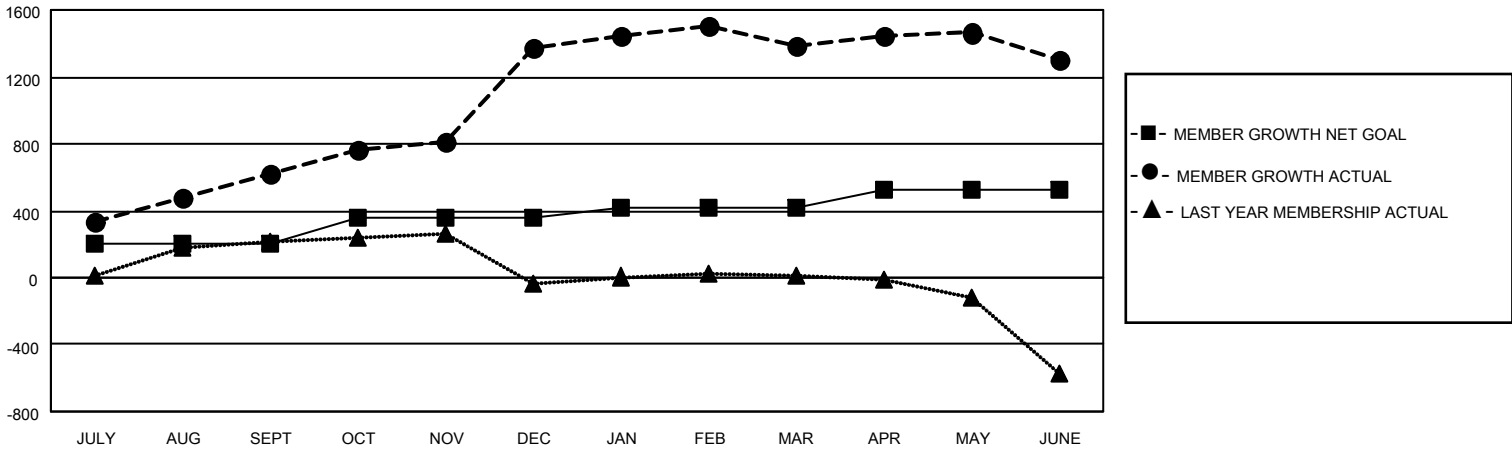
Clubs			
RESULTS FOR 2020-2021			
QUARTER	NEW CLUB GOAL	NEW CLUBS	DROPPED CLUBS
JULY/AUG/SEPT	10	13	1
OCT/NOV/DEC	3	26	0
JAN/FEB/MAR	1	3	9
APR/MAY/JUNE	1	8	0

Members			
RESULTS FOR 2020-2021			
QUARTER	MEMBER GROWTH NET GOAL	MEMBER GROWTH ACTUAL	DROPPED MEMBERS ACTUAL (including transfers)
JULY/AUG/SEPT	205	742	92
OCT/NOV/DEC	156	1006	238
JAN/FEB/MAR	55	251	203
APR/MAY/JUNE	105	456	529

GOALS AND ACTUAL NEW CLUBS CUMULATIVE



GOALS AND ACTUAL MEMBERS CUMULATIVE



DROPPED CLUBS: 10

171 CLUBS OF 247 ADDED 1 OR MORE NEW MEMBERS

GENDER DISTRIBUTION

MALE 4,229 (70.10%)
FEMALE 1,804 (29.90%)

DROPPED MEMBERS

[CLICK HERE FOR CUMULATIVE MEMBERSHIP DATA](#)

DECEASED	7
CLUB CANCELLED	145
OTHER	910
TOTAL	1,062

TOTAL FAMILY UNIT MEMBERS	3,805
FAMILY MEMBERS PAYING HALF DUES	2,499